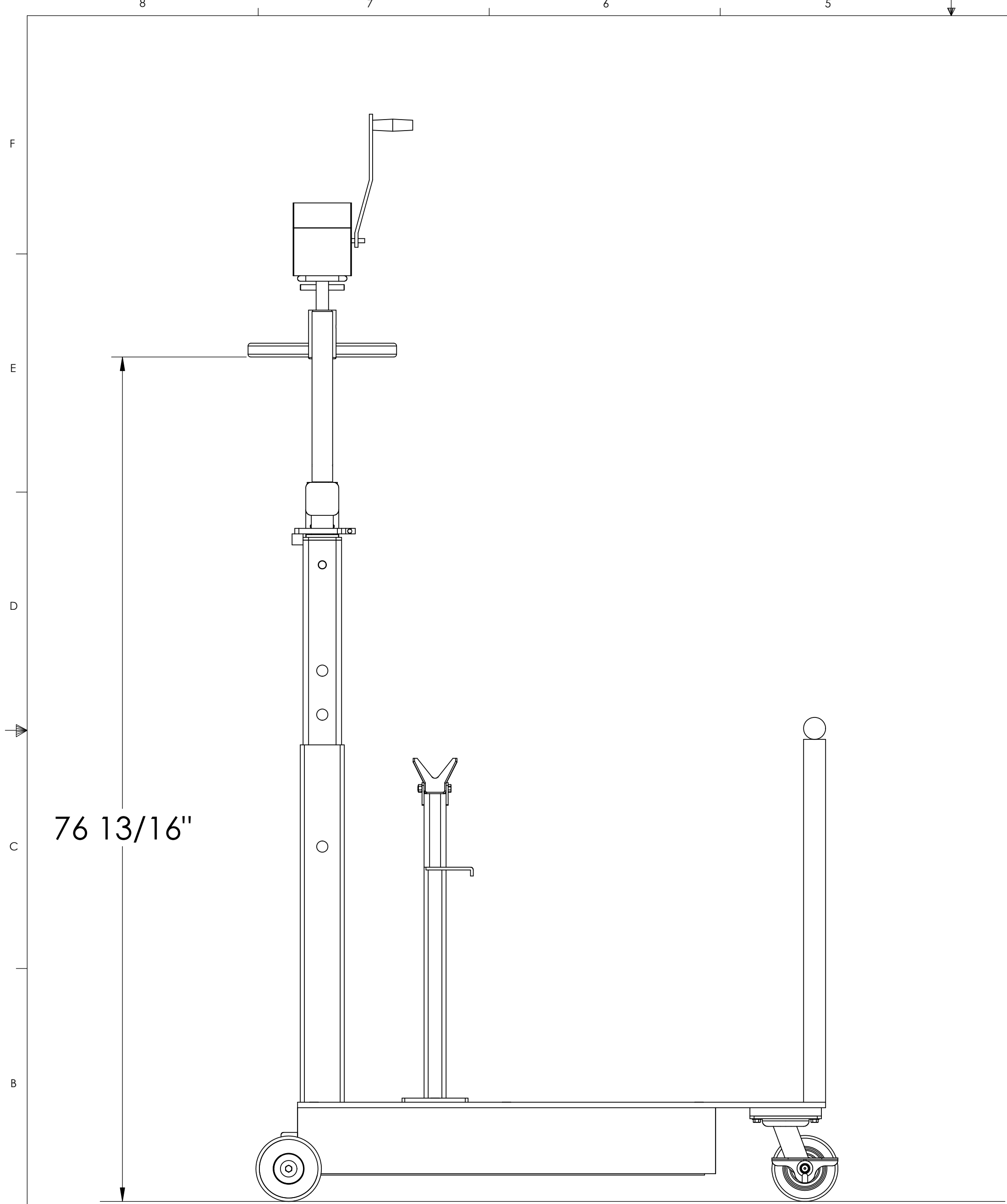
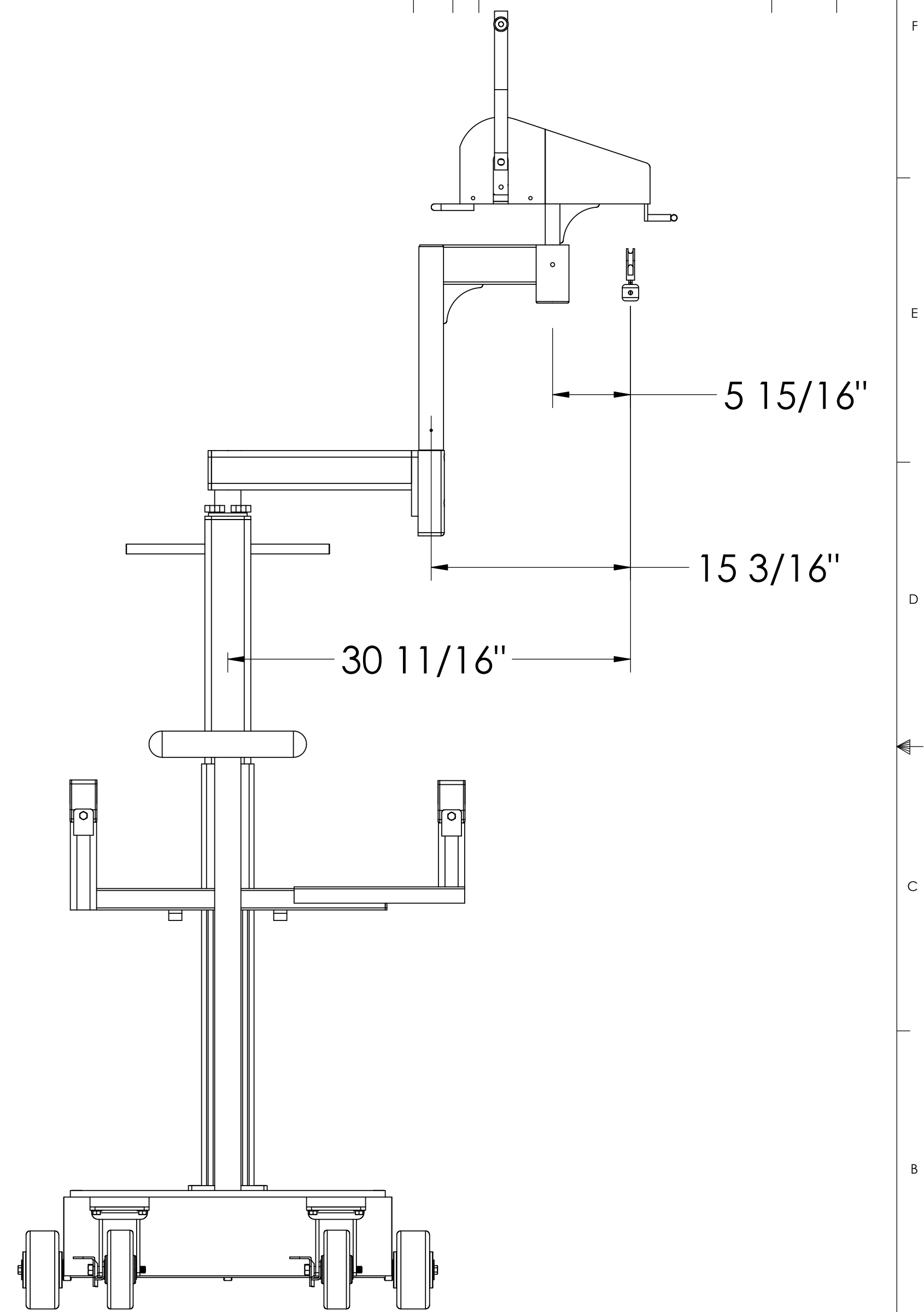


REVISIONS				
ZONE	REV.	DESCRIPTION	DATE	APPROVED
-	-		-	-
-	-		-	-



76 13/16"



5 15/16"

15 3/16"

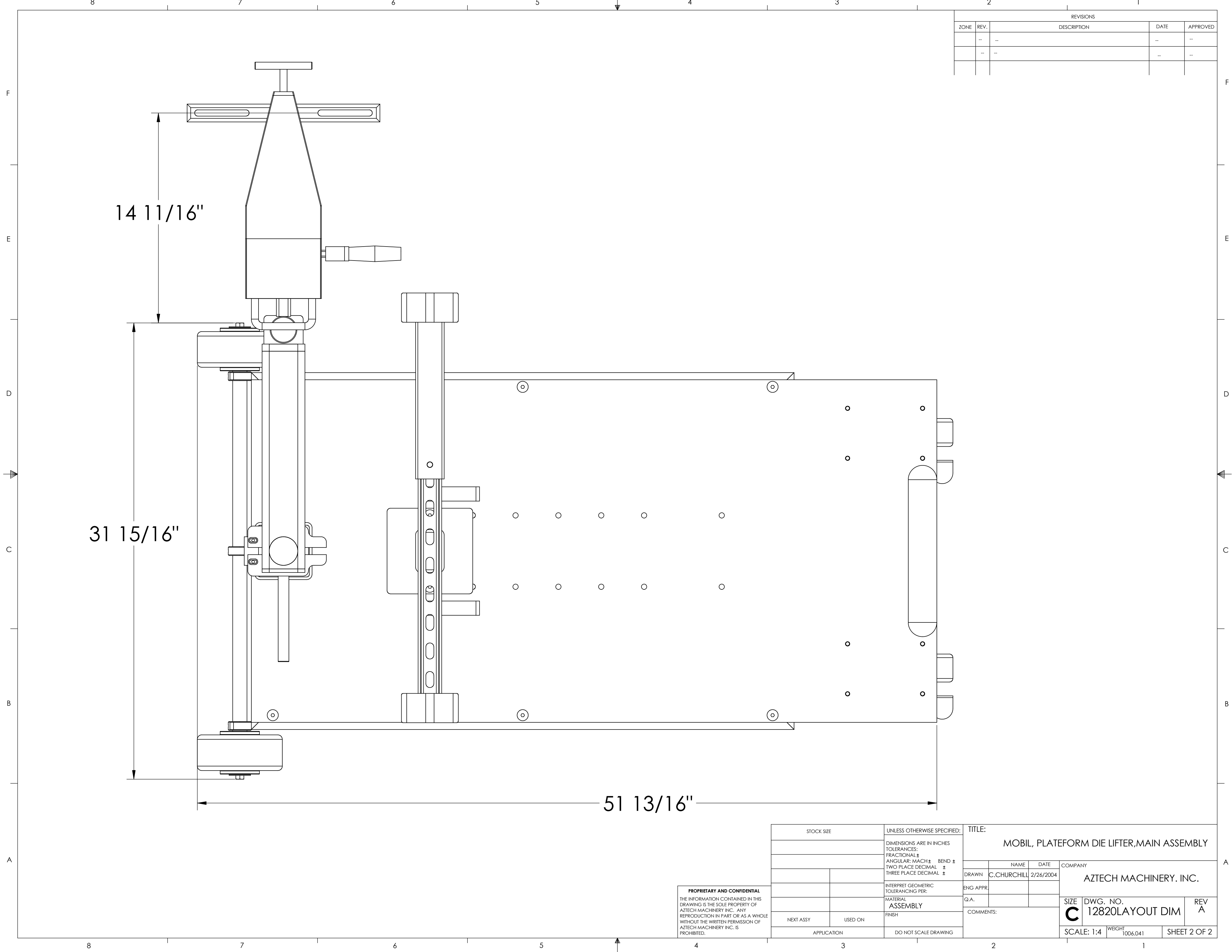
30 11/16"

**PROPRIETARY AND CONFIDENTIAL**  
 THE INFORMATION CONTAINED IN THIS DRAWING IS THE SOLE PROPERTY OF AZTECH MACHINERY INC. ANY REPRODUCTION IN PART OR AS A WHOLE WITHOUT THE WRITTEN PERMISSION OF AZTECH MACHINERY INC. IS PROHIBITED.

STOCK SIZE	UNLESS OTHERWISE SPECIFIED:	TITLE:
	DIMENSIONS ARE IN INCHES	MOBIL, PLATFORM DIE LIFTER, MAIN ASSEMBLY
	TOLERANCES:	
	FRACTIONAL ±	
	ANGULAR: MACH ± BEND ±	
	TWO PLACE DECIMAL ±	
	THREE PLACE DECIMAL ±	
	INTERPRET GEOMETRIC TOLERANCING PER:	
	MATERIAL	
	ASSEMBLY	
	FINISH	
NEXT ASSY	USED ON	
APPLICATION	DO NOT SCALE DRAWING	

DRAWN C.CHURCHILL 2/26/2004		COMPANY	
ENG APPR.		AZTECH MACHINERY, INC.	
Q.A.		SIZE	DWG. NO.
COMMENTS:		C	12820LAYOUT DIM
		SCALE: 1:8	REV A
		WEIGHT 1006.041	SHEET 1 OF 2

REVISIONS				
ZONE	REV.	DESCRIPTION	DATE	APPROVED
	--		--	--
	--		--	--



14 11/16"

31 15/16"

51 13/16"

**PROPRIETARY AND CONFIDENTIAL**  
 THE INFORMATION CONTAINED IN THIS DRAWING IS THE SOLE PROPERTY OF AZTECH MACHINERY INC. ANY REPRODUCTION IN PART OR AS A WHOLE WITHOUT THE WRITTEN PERMISSION OF AZTECH MACHINERY INC. IS PROHIBITED.

STOCK SIZE	UNLESS OTHERWISE SPECIFIED:	TITLE:
	DIMENSIONS ARE IN INCHES	MOBIL, PLATFORM DIE LIFTER, MAIN ASSEMBLY
	TOLERANCES:	
	FRACTIONAL ±	
	ANGULAR: MACH ± BEND ±	
	TWO PLACE DECIMAL ±	
	THREE PLACE DECIMAL ±	
	INTERPRET GEOMETRIC TOLERANCING PER:	
	MATERIAL:	
	ASSEMBLY:	
	FINISH:	
NEXT ASSY	USED ON	APPLICATION
		DO NOT SCALE DRAWING

DRAWN: C.CHURCHILL		DATE: 2/26/2004	COMPANY: AZTECH MACHINERY, INC.
ENG APPR:	Q.A.:	COMMENTS:	
SIZE: <b>C</b>	DWG. NO.: 12820LAYOUT DIM	REV: A	
SCALE: 1:4	WEIGHT: 1006.041	SHEET 2 OF 2	