

# BSR Series by AzTech

## High-Speed Slitter Rewinder Inspectors

### Quality, Productivity, Affordability.....AzTECH

For over 20 years, AzTech has provided innovative high quality and affordably priced solutions for the printing and converting industry.

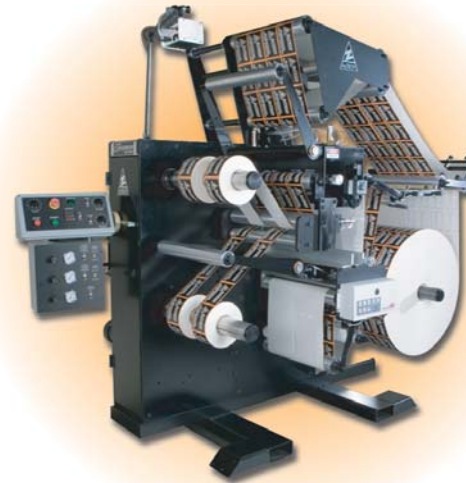
The AzTech BSR Series of Slitter Rewinder Inspectors is the perfect blend of quality, versatility, reliability, and affordability for today's demanding and competitive market. Available in web widths of 10" (254mm), 13" (330mm), 16" (406mm), and 18" (457mm), the BSR Series is available with a wide range of options, is extremely simple to maintain and operate, and will provide years of superior reliability and productivity.

### Standard Features:

- Proven Smooth Running and Reliable Clutchless Drive
- 750 Feet/Min (228 Meters/Min) Max. Web Speed
- Adjustable Electronic Web Tension Control
- Choice of Either Left-Right or Right-Left Web Path
- Reversible Rewind(s) for Over or Under Winding
- Interchangeable Slitting Station Module with Choice of Rotary Shear or Razor (Pneumatic Crush Extra)
- 40" (1016mm) Max. Diameter Unwind with Heavy-Duty Pneumatic Disc Brake
- 24" (609mm) Max. Diameter Rewind(s) with E-Z Change Spindle(s)
- Ultrasonic Web Guide for Processing Both Clear and Opaque Substrates
- Programmable Incremental Counter

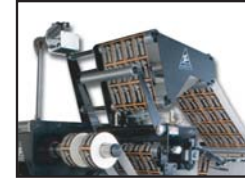


Model BSR Single-Spindle  
(Shown with Left-Right Web Path)

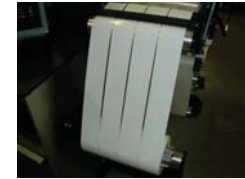


Model BSR2X Dual-Spindle with  
Optional Inspection Tower  
(Shown with Right-Left Web Path)

### Optional Accessories:



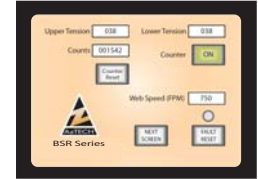
Forward Inspection Tower with Synchronized Strobe



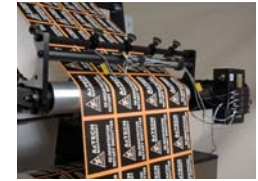
Spread-Roller for Separating Finished Rolls at Rewind



Inspection Table for Mounting Ancillary Imprinting & Inspection Equipment



PLC Controlled Tension with Touch-Screen for Precise "Set and Forget" Web Tension



Electronic Missing Label and Splice Detection



Pneumatic Crush Knife Slitting Station Module



Pneumatically Activated Top-Rider Rolls for Unsupported Film and Large Diameter Rewinding

Proudly Manufactured in the U.S.A. 