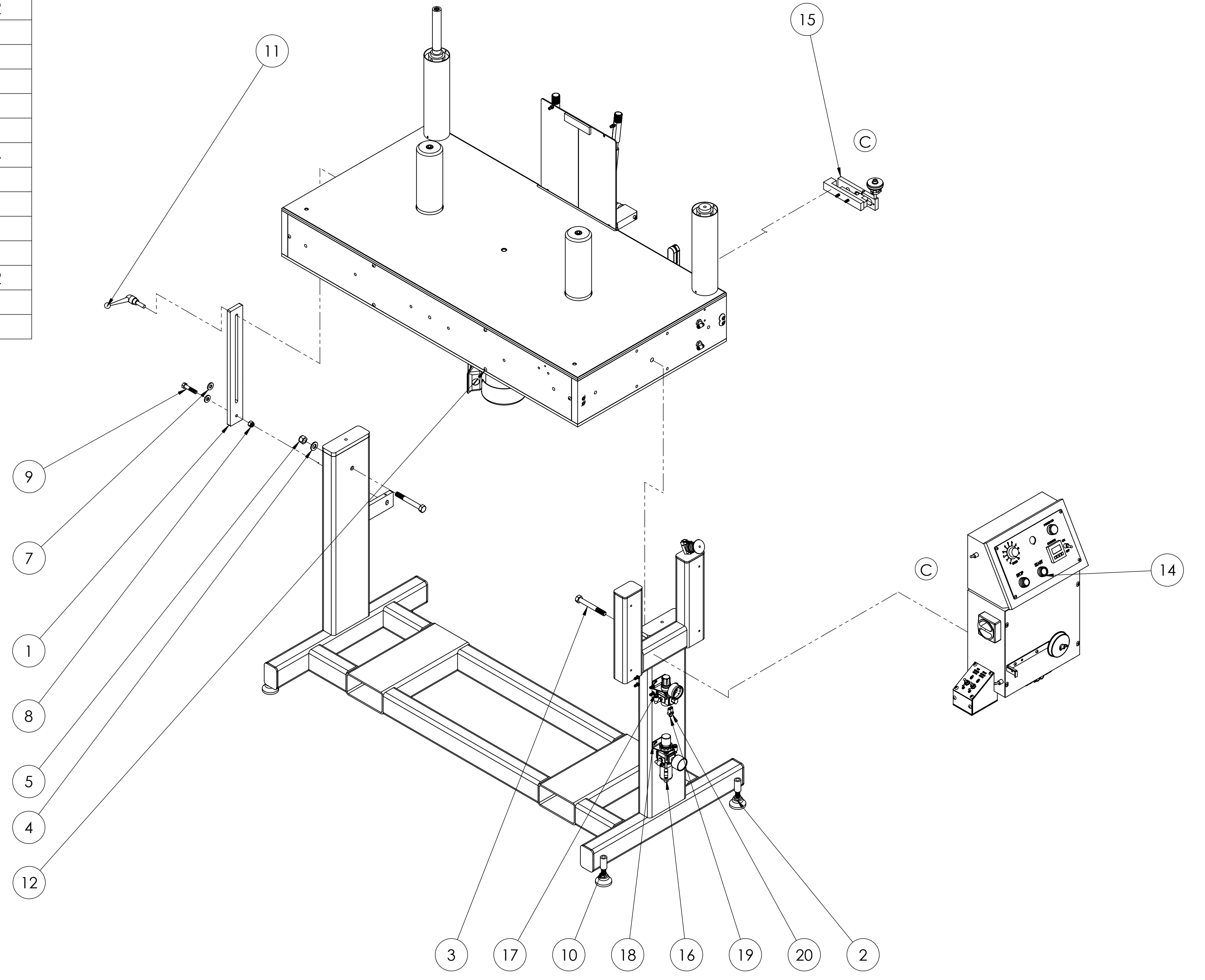
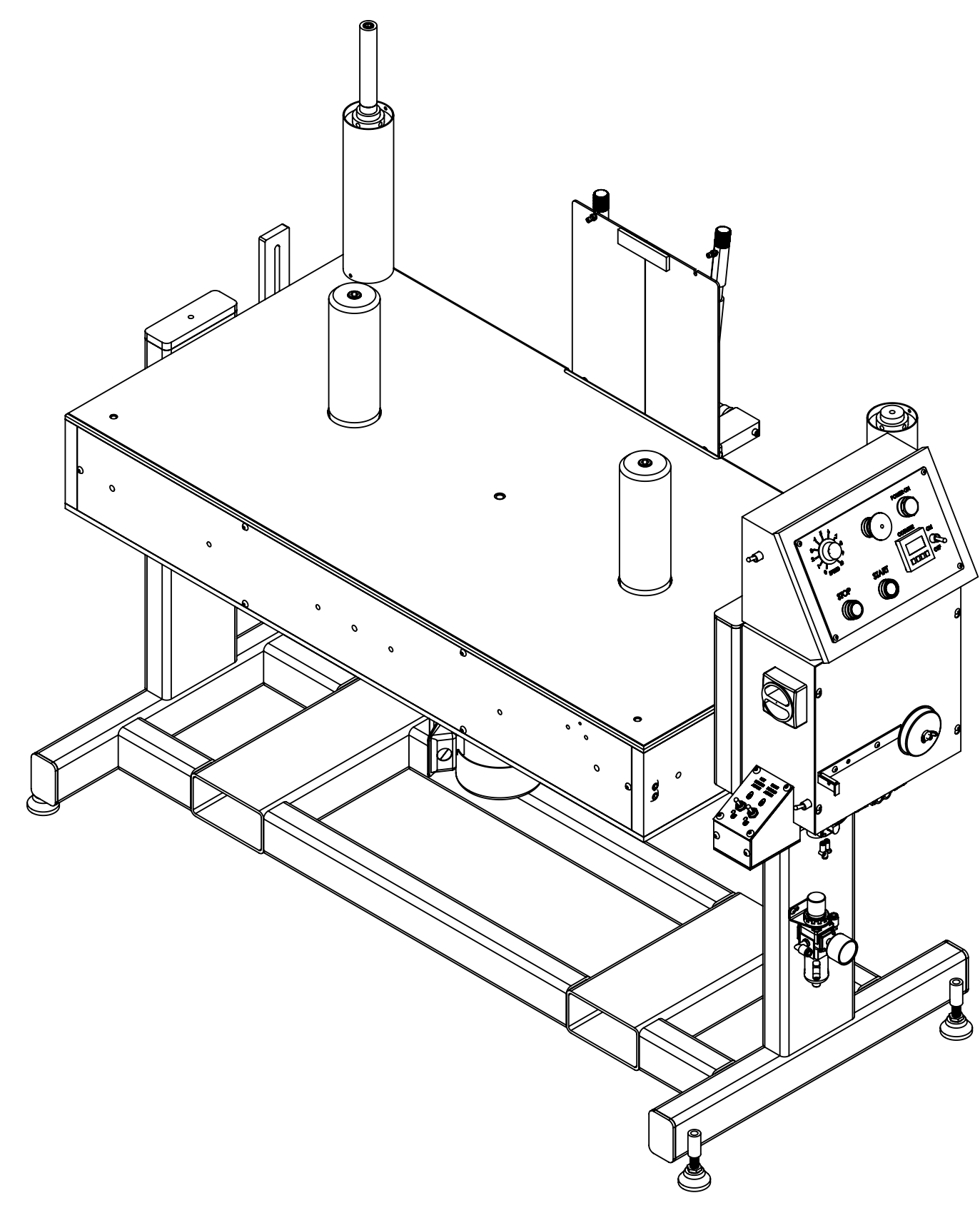


ITEM NO.	PART NUMBER	DESCRIPTION	Default /QTY.
1	18169	SLOT LINK	1
2	6111K22	LEVELING PAD,1/2-13	4
3	HEX BOLT_~500-13 UNC_4_SIMP		2
4	WSHR A_500 HARD	HARD FLAT WASHER 1/2"	2
5	HEX NUT_500-13 UNC_0_LOCK	NYLOCK NUT 1/2-13	2
6	SCH_~164-32 UNC_0~5_SIMP	SOCKET HEAD CAP SCREW 8-32 X 1/2"	1
7	WSHR A_375 HARD	3/8" HARD WASHER	2
8	HEX NUT_375-16 UNC_0_LOCK	NYLOCK NUT 3/8-16	1
9	HEX BOLT_~375-16 UNC_1~75_SIMP	HEX BOLT 3/8-16 X 1-3/4 GRADE 5	1
10	19521	TABLE TOP REWINDER BASE WELDMENT ASSEMBLY	1
11	6271K32	CLAMP HANDLE 1.18 THREAD LENGTH	1
12	19623	TABLE TOP REWINDER TABLE ASSEMBLY	1
13	BTNHD_~250-20 UNC_0~5_SIMP	BUTTON HEAD CAP SCREW 1/4-20 X 1/2"	4
14	20630	x90 TABLE TOP REWIND ELECTRICAL CONTROL ASSEMBLY	1
15	20300	TABLE TOP COUNTER MAIN ASSEMBLY	1
16	AW20-N01BG-CZ x90		1
17	EXP3417	AIR REGULATOR WITH GUAGE AND FITINGS	1
18	BTNHD_~190-32 UNF_0~5_SIMP	BUTTON HEAD CAP SCREW 10-32 X 1/2"	2
19	KQ2U03-00A	Union "Y"	1
20	BTNHD_~138-32 UNC_0~5_SIMP	BUTTON HEAD CAP SCREW 6-32 X 1/2"	1

REVISIONS				
ZONE	REV.	DESCRIPTION	DATE	APPROVED
	B	ADDED LEVELING CASTER CONFIGURATION	10/9/2014	J.M.
	C	C3 ADDED NEW COUNT WHEEL, FINISHED ELECTRICAL CAB	6/18/2015	



PROPRIETARY AND CONFIDENTIAL
 THE INFORMATION CONTAINED IN THIS DRAWING IS THE SOLE PROPERTY OF AZTECH CONVERTING SYSTEMS, INC. ANY REPRODUCTION IN PART OR AS A WHOLE WITHOUT THE WRITTEN PERMISSION OF AZTECH MACHINERY INC. IS PROHIBITED.

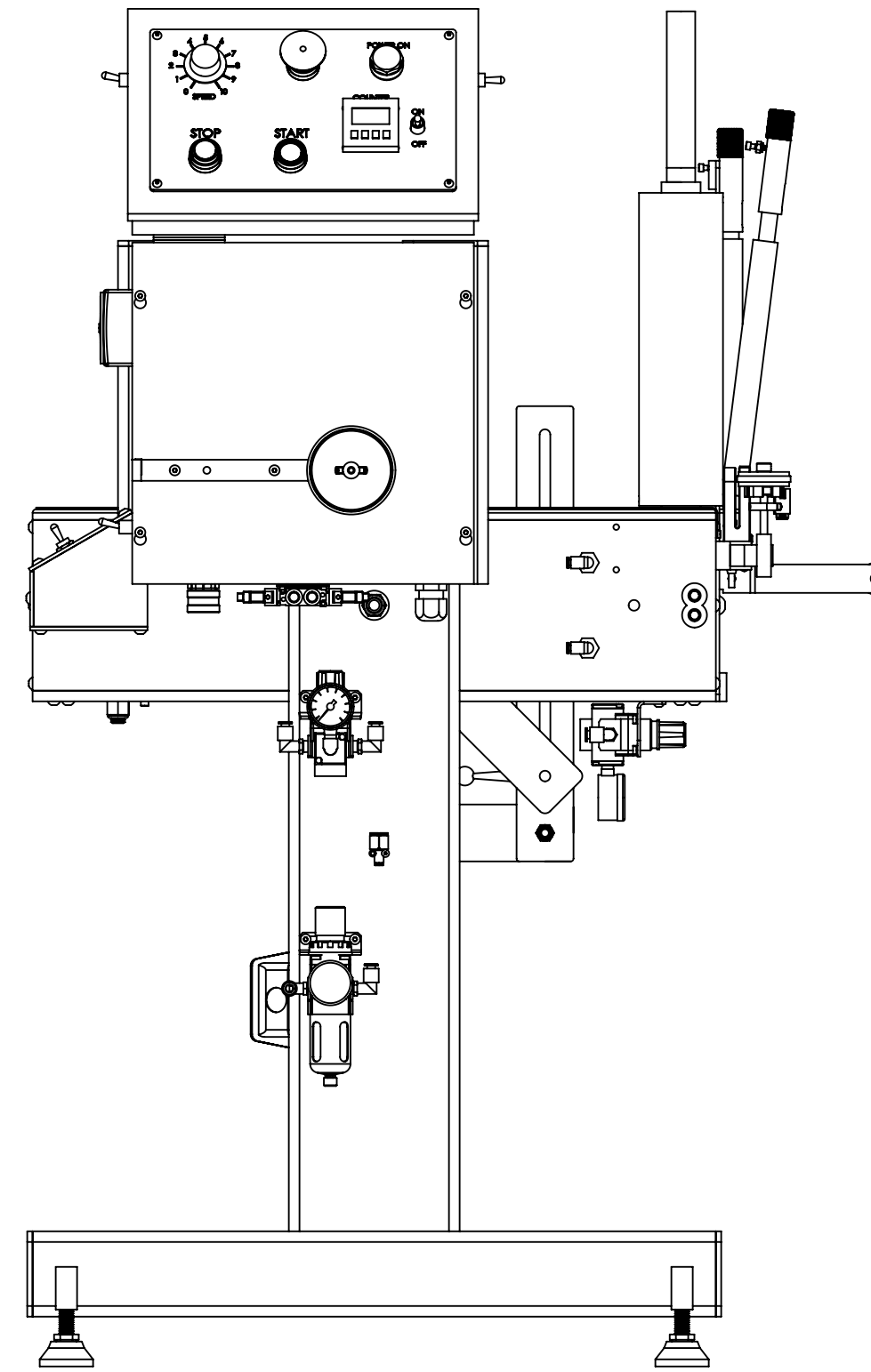
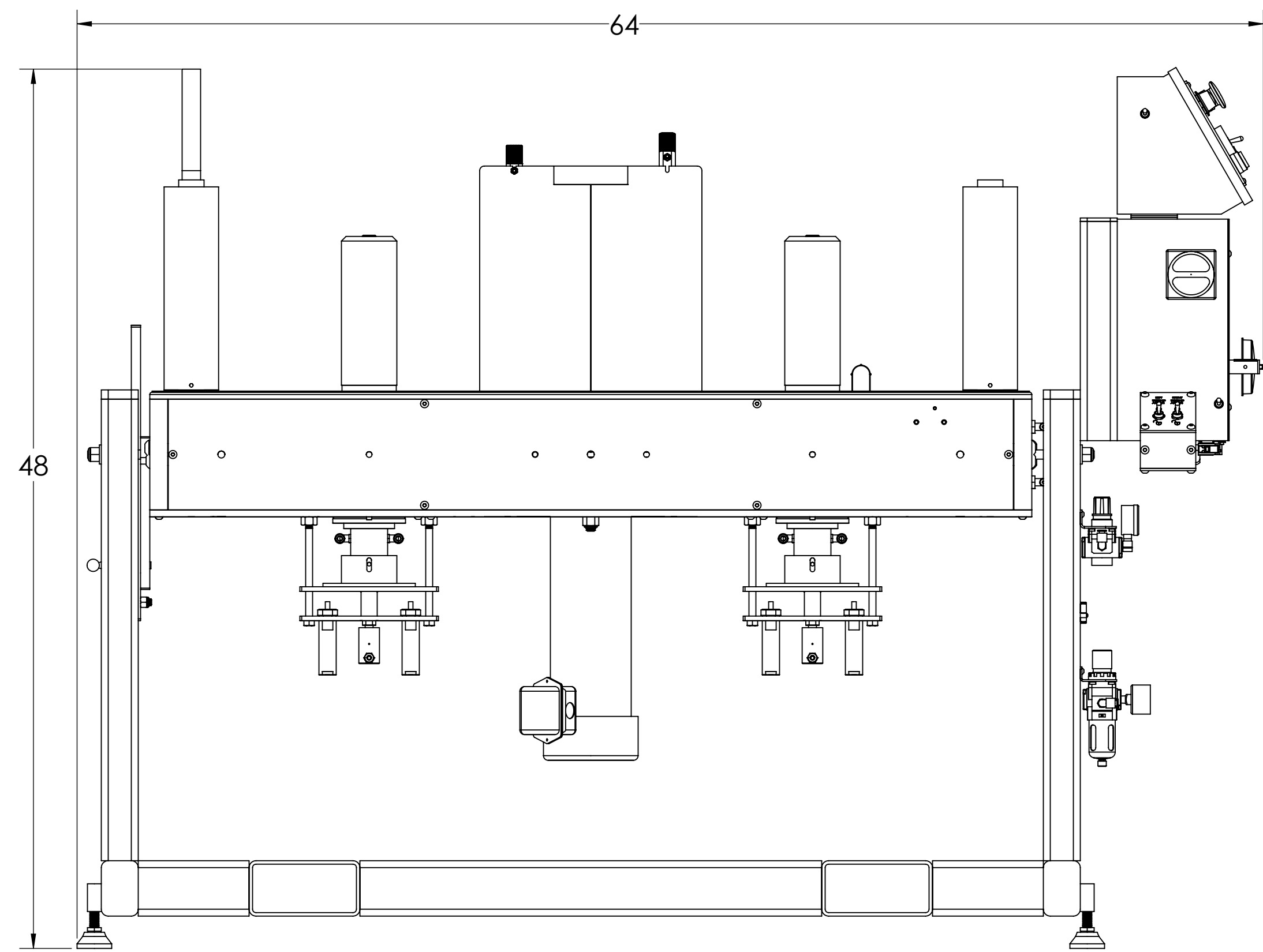
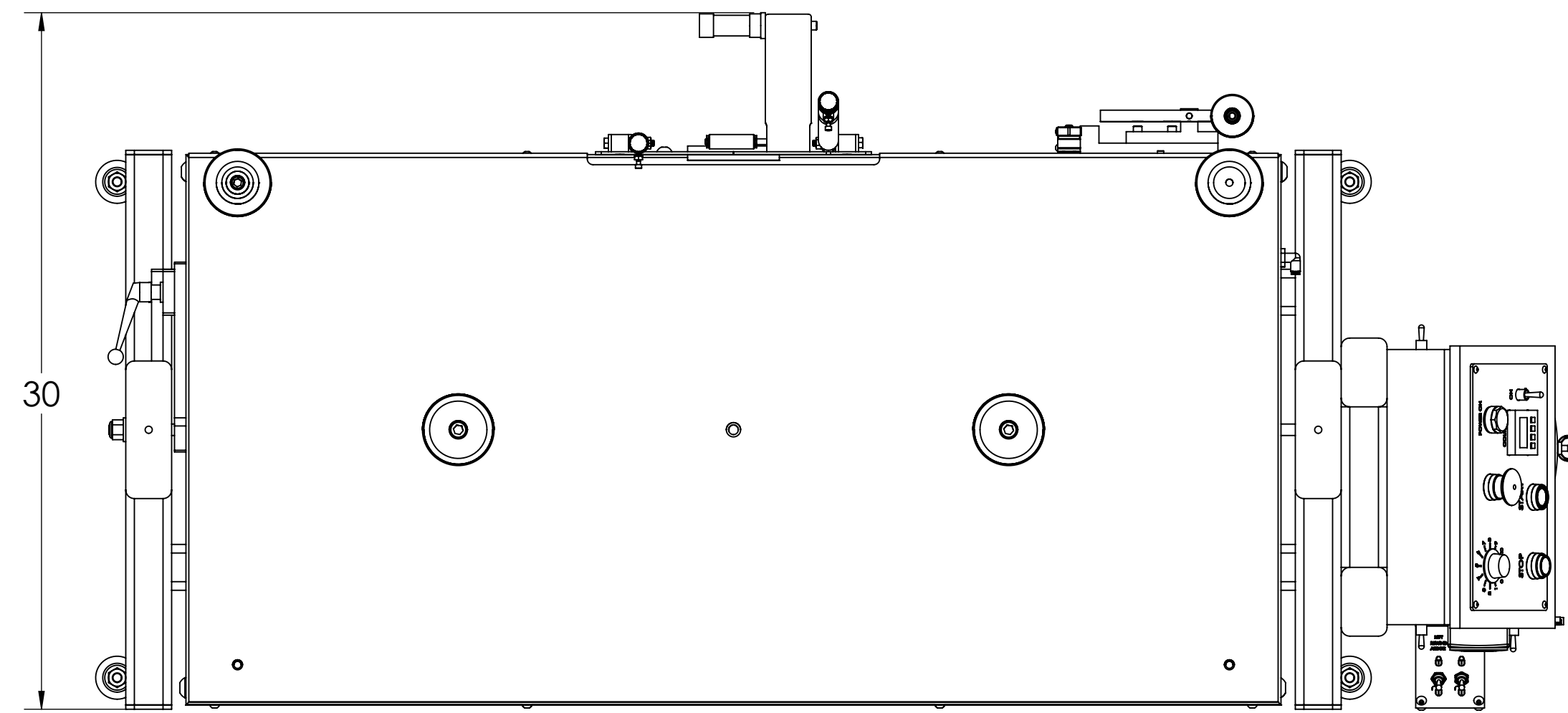
NUMBER	NAME	DATE	COMPANY
	K.PECHACEK	4/16/2012	AZTECH CONVERTING SYSTEMS, INC.
NEXT ASSY	USED ON	FINISH	SIZE DWG. NO. REV
			D 19522 C
APPLICATION			SCALE: 1:8 SHEET 1 OF 3

UNLESS OTHERWISE SPECIFIED:
 DIMENSIONS ARE IN INCHES
 TOLERANCES:
 FRACTIONAL ± 1/16
 ANGULAR MADE ± 1
 TWO PLACE DECIMAL ± .01
 THREE PLACE DECIMAL ± .005

INTERPRET GEOMETRIC TOLERANCING PER:
 MATERIAL ASSEMBLY

TITLE: TABLE TOP REWINDER TABLE ASSEMBLY

COMMENTS:

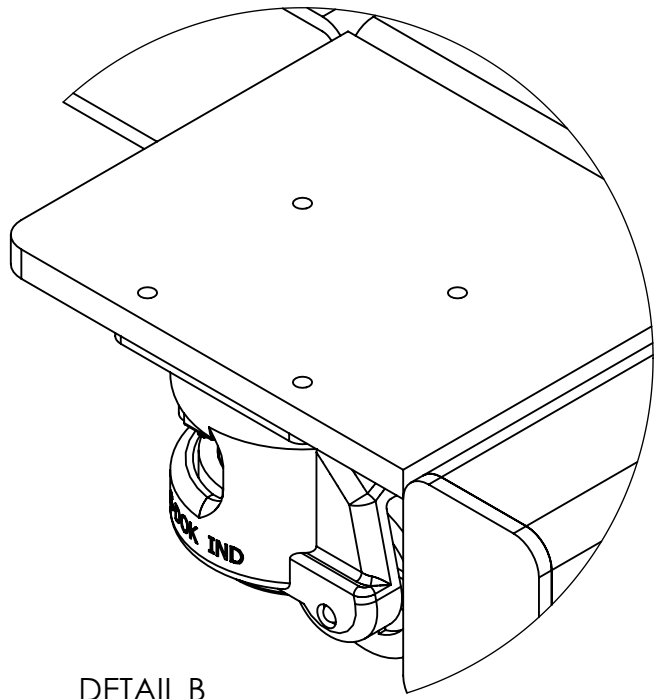
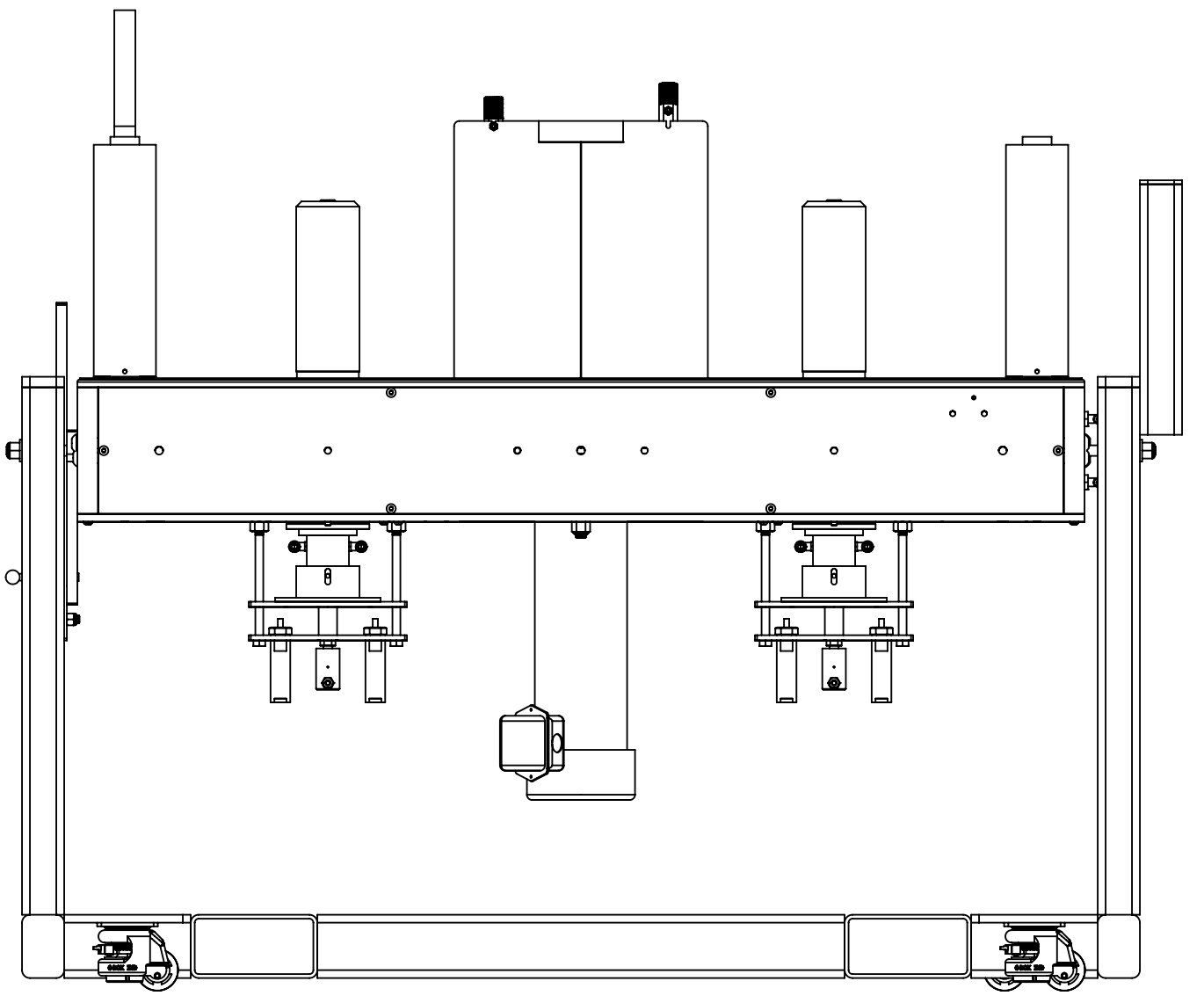
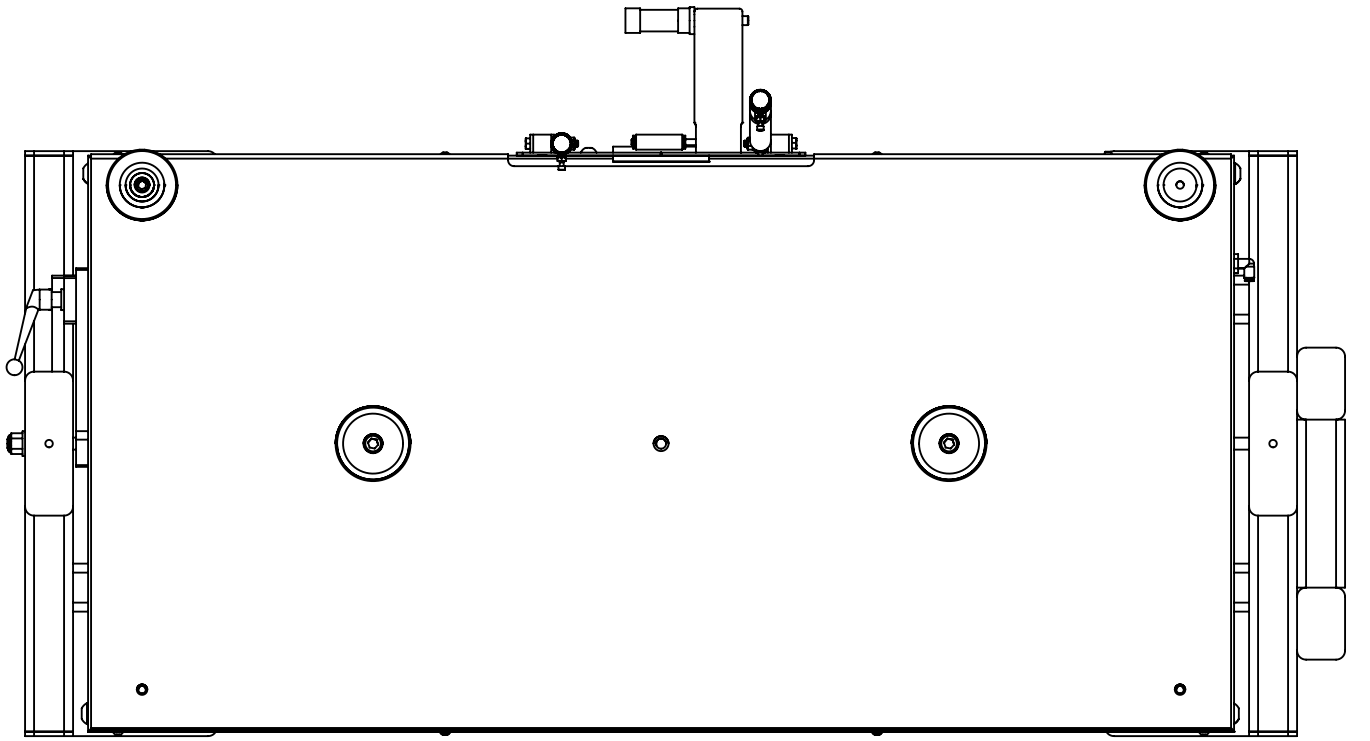


PROPRIETARY AND CONFIDENTIAL
 THE INFORMATION CONTAINED IN THIS DRAWING IS THE SOLE PROPERTY OF AZTECH CONVERTING SYSTEMS INC. ANY REPRODUCTION IN PART OR AS A WHOLE WITHOUT THE WRITTEN PERMISSION OF AZTECH MACHINERY INC. IS PROHIBITED.

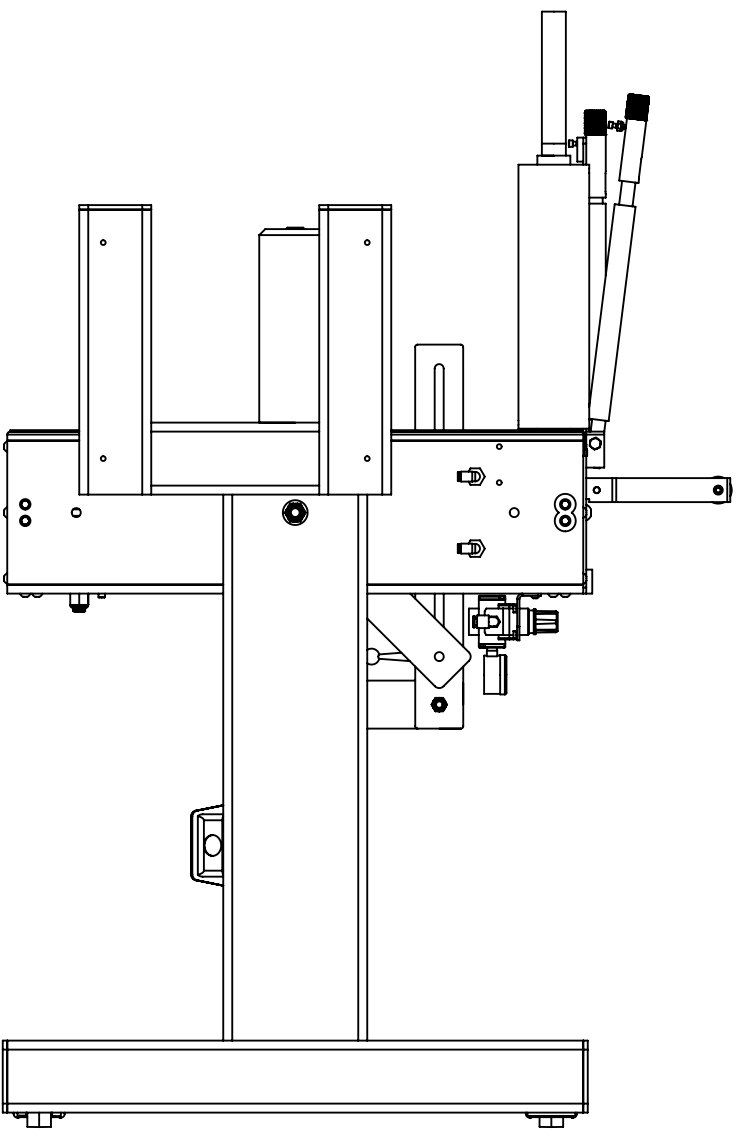
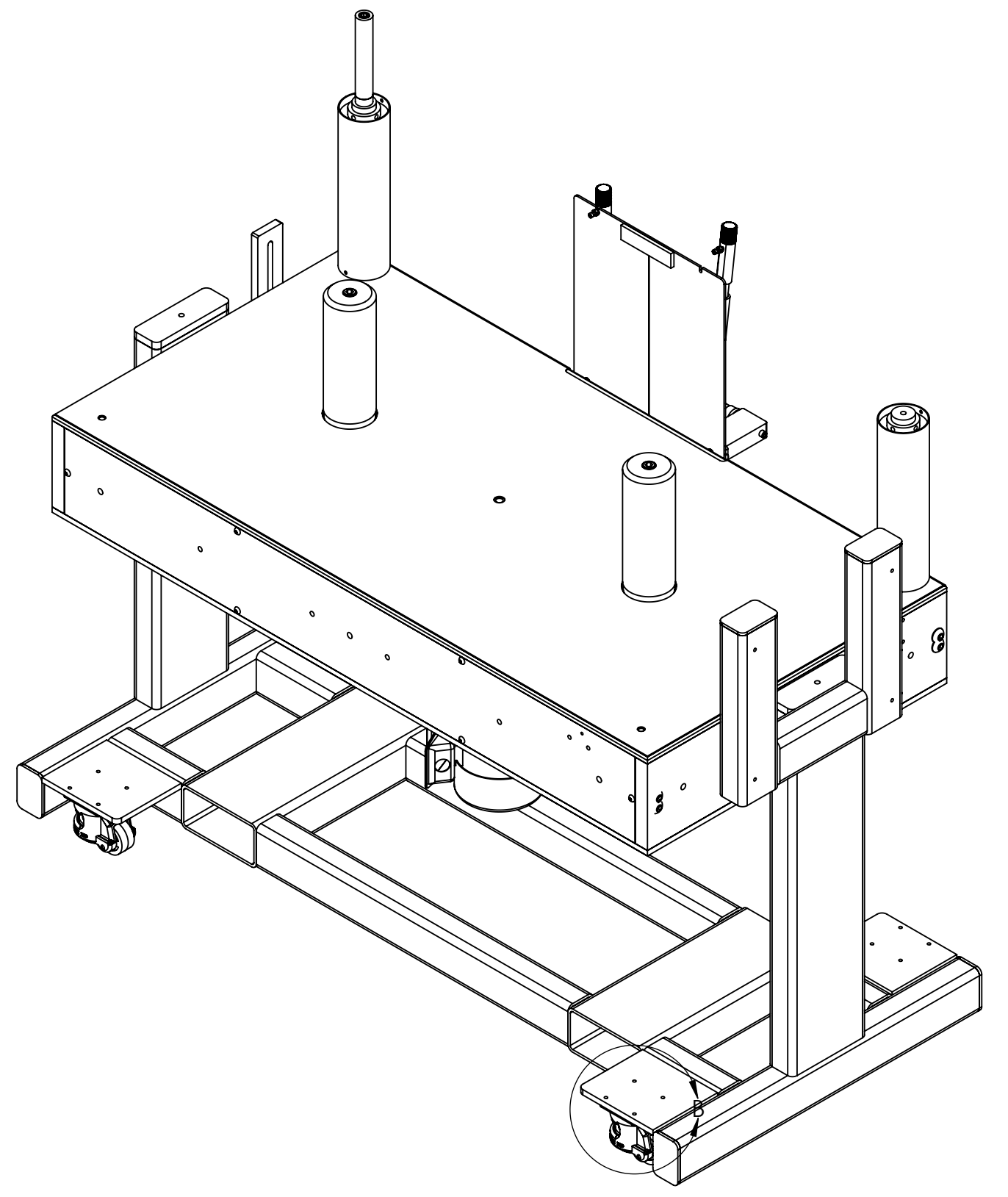
UNLESS OTHERWISE SPECIFIED: DIMENSIONS ARE IN INCHES TOLERANCES: FRACTIONAL ± 1/16 ANGULAR: MACH ± 1° TWO PLACE DECIMAL ± .01 THREE PLACE DECIMAL ± .005		TITLE: TABLE TOP REWINDER TABLE ASSEMBLY	
INTERPRET GEOMETRIC TOLERANCING PER: ASSEMBLY		NAME C. CHURCHILL	DATE 3/2/2011
MATERIAL		COMPANY AZTECH CONVERTING SYSTEMS, INC.	
FINISH		ENG APPR.	SIZE D
COMMENTS:		DWG. NO. 19522	
		REV C	
		SCALE: 1:8	
		SHEET 2 OF 3	

D 19522 C

ITEM NO.	PART NUMBER	DESCRIPTION	WITH LEVELING CASTERS/QTY.
1	19423	TABLE TOP REWINDER TABLE ASSEMBLY	1
2	19521	TABLE TOP REWINDER BASE WELDMENT ASSEMBLY	1
3	18169	SLOT LINK	1
4	WSHR A_.375 HARD	3/8" HARD WASHER	2
5	HEX BOLT ~375-16 UNC_1~75_SIMP	HEX BOLT 3/8-16 X 1-3/4 GRADE 5	1
6	HEX NUT .375-16 UNC_0_LOCK	NYLOCK NUT 3/8-16	1
7	SCH ~164-32 UNC_0~5_SIMP	SOCKET HEAD CAP SCREW 8-32 X 1/2"	1
8	HEX BOLT ~500-13 UNC_4_SIMP		2
9	WSHR A_.500 HARD	HARD FLAT WASHER 1/2"	2
10	HEX NUT .500-13 UNC_0_LOCK	NYLOCK NUT 1/2-13	2
11	6271K32	CLAMP HANDLE 1.18 THREAD LENGTH	1
12	19929	LEVELING CASTER, 550 LB CAP, GDR-60-F	4



DETAIL B
SCALE 1 : 2



SHOWN WITH OPTIONAL LEVELING CASTERS

PROPRIETARY AND CONFIDENTIAL
THE INFORMATION CONTAINED IN THIS DRAWING IS THE SOLE PROPERTY OF [INSERT COMPANY NAME HERE]. ANY REPRODUCTION IN PART OR AS A WHOLE WITHOUT THE WRITTEN PERMISSION OF [INSERT COMPANY NAME HERE] IS PROHIBITED.

UNLESS OTHERWISE SPECIFIED:		NAME	DATE
DIMENSIONS ARE IN INCHES			
TOLERANCES:			
FRACTIONAL ±			
ANGULAR: MATCH ±	BEND ±		
TWO PLACE DECIMAL ±	THREE PLACE DECIMAL ±		
INTERPRET GEOMETRIC TOLERANCING PER:		G.A.	
MATERIAL:		COMMENTS:	
ASSEMBLY			
NEXT ASSY	USED ON	FINISH	
APPLICATION			

DRAWN		NAME		DATE	
CHECKED					
ENG APPR.					
MFG APPR.					
TITLE:					
TABLE TOP REWINDER TABLE ASSEMBLY					
SIZE	DWG. NO.	REV			
D	19522	C			
SCALE: 1:8	WEIGHT:	SHEET 3 OF 3			