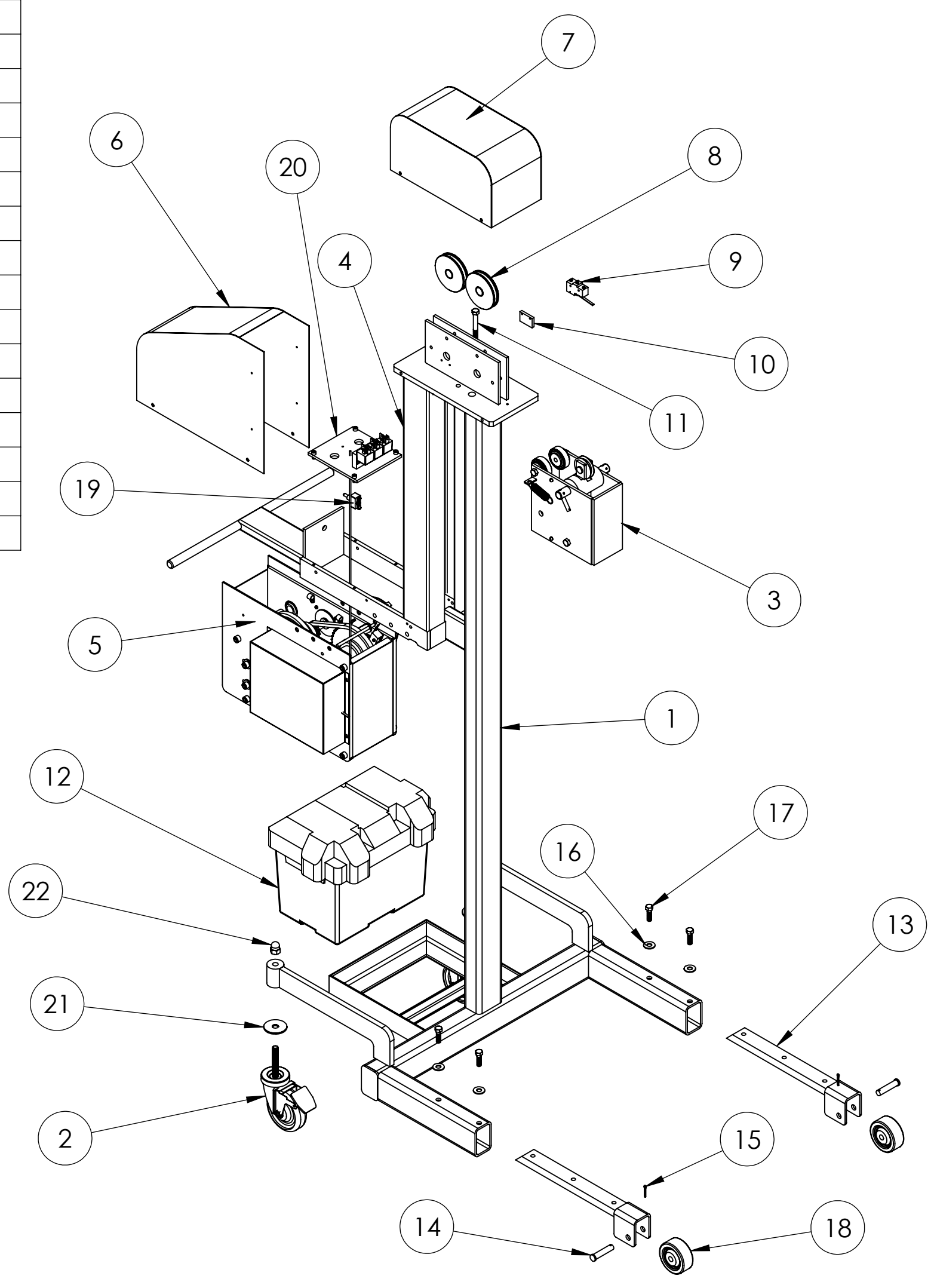


PROPRIETARY AND CONFIDENTIAL
THE INFORMATION CONTAINED IN THIS DRAWING IS THE SOLE PROPERTY OF AZTECH CONVERTING SYSTEMS INC. ANY REPRODUCTION IN PART OR AS A WHOLE WITHOUT THE WRITTEN PERMISSION OF AZTECH MACHINERY INC. IS PROHIBITED.

STOCK SIZE		UNLESS OTHERWISE SPECIFIED:		TITLE:	
NUMBER		DIMENSIONS ARE IN INCHES		MH400CE MAIN ASSEMBLY	
17307		TOLERANCES:			
NEXT ASSY		FRACTIONAL ± 1/16		DRAWN	
USED ON		ANGULAR: MA CH ± 1 BEND ±		J.MILLER	
APPLICATION		THREE PLACE DECIMAL ±.01		DATE	
		INTERPRET GEOMETRIC TOLERANCING PER:		8/13/10	
		MATERIAL		COMPANY	
		ASSEMBLY		AZTECH CONVERTING SYSTEMS, INC.	
		FINISH		ENG APPR.	
		NONE		Q.A.	
		DO NOT SCALE DRAWING		COMMENTS:	
				SIZE DWG. NO. REV	
				C 17307 X2	
				SCALE: 1:10 WEIGHT 218.74 SHEET 1 OF 2	

ITEM NO.	PART NUMBER	DESCRIPTION	Default /QTY.
1	17308	MH400CE FRAME WELDMENT	1
2	4in_Caster_Aasm	CAS084-894	2
3	12151	MH40 TROLLEY BRAKE ASSEMBLY	1
4	17310	MH400 ELECTRIC SLIDE COVER, MH400C ASSEMBLY	1
5	16798	MH40 ELECTRIC WINCH ASSEMBLY	1
6	16668	MH800 ELECTRIC LOWER COVER WELDMENT	1
7	17092	MH400C ELECTRIC TOP COVER WELDMENT	1
8	00358	PULLEY, 1550 #, 3.5 OD	2
9	Z-15GW-B7-K ASSEMBLY	General Purpose Snap Action Switch	1
10	17115	MH400C ELECTRIC SWITCH SPACER	1
11	HEX BOLT_~375-16 UNC_2~75_SIMP		1
12	BATTERY BOX		1
13	13095	MH40 LEG WELDMENT	2
14	18974	Steel Clevis Pin 1/2" Diameter, 2-1/4" Length, 2" Usable Length	2
15	18975	Zinc-Plated Steel Cotter Pin 1/8" Diameter, 1" Length	2
16	FLW_~375		4
17	HEX BOLT_~375-16 UNC_1~25_SIMP	HEX BOLT GRADE 5, 3/8-16 X 1-1/4	4
18	MH80_wheel	3" DIA WHEEL	2
19	15189	Switch Function Momentary On/Off/Momentary On, SPDT	1
20	16748	MH800 ELECTRIC RELAY MOUNT ASSEMBLY	1
21	13989	MH40 SWIVEL CASTER SUPPORT WASHER	2
22	ACORN HI-UNC_0~5000_SIMP		2



PROPRIETARY AND CONFIDENTIAL
 THE INFORMATION CONTAINED IN THIS DRAWING IS THE SOLE PROPERTY OF AZTECH CONVERTING SYSTEMS INC. ANY REPRODUCTION IN PART OR AS A WHOLE WITHOUT THE WRITTEN PERMISSION OF AZTECH MACHINERY INC. IS PROHIBITED.

STOCK SIZE	UNLESS OTHERWISE SPECIFIED:	TITLE:		
NUMBER	DIMENSIONS ARE IN INCHES TOLERANCES: FRACTIONAL ± 1/16 ANGULAR: MACH ± 1 BEND ± TWO PLACE DECIMAL ± .01 THREE PLACE DECIMAL ± .005	MH400CE MAIN ASSEMBLY		
17307	INTERPRET GEOMETRIC TOLERANCING PER:	DRAWN	NAME	DATE
	MATERIAL	J.MILLER		8/13/10
	ASSEMBLY	ENG APPR.	COMPANY	
	FINISH	Q.A.	AZTECH CONVERTING SYSTEMS, INC.	
NEXT ASSY	USED ON	COMMENTS:	SIZE	DWG. NO.
			C	17307
APPLICATION	DO NOT SCALE DRAWING		REV	X2
			SCALE: 1:10	WEIGHT 218.74
			SHEET 2 OF 2	